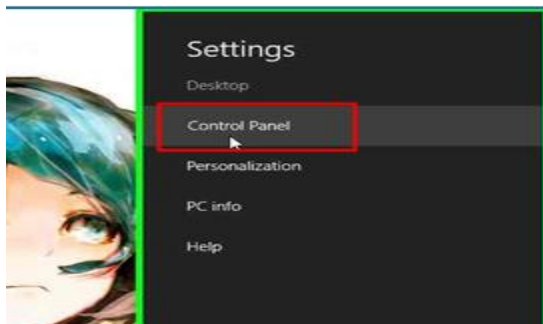


Steps

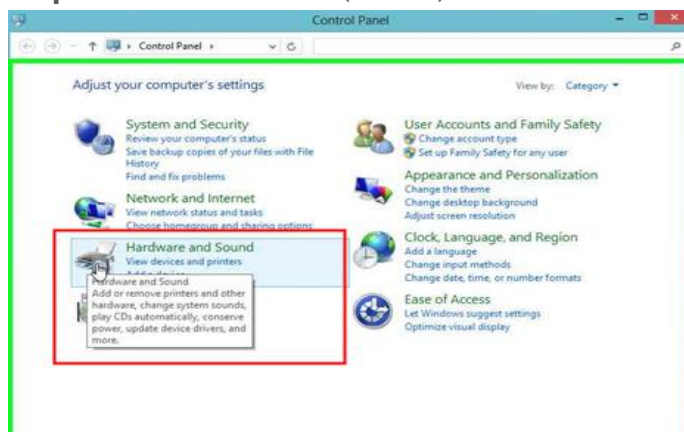
Step 1: left click on "Settings (button)" in "Charm Bar"



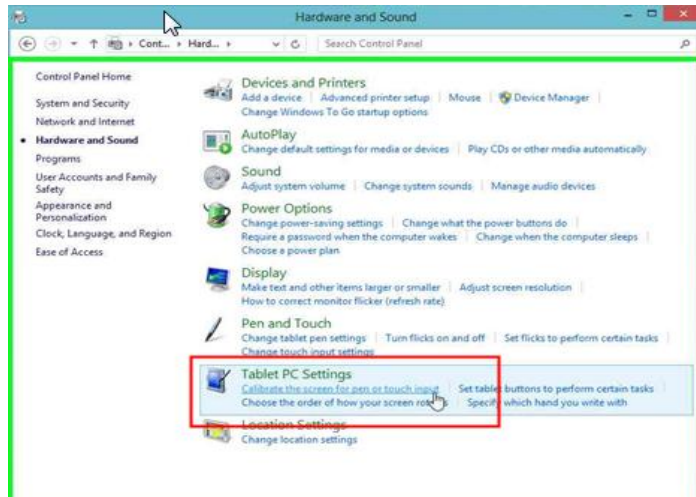
Step 2: left click on "Control Panel (list item)" in "Settings"



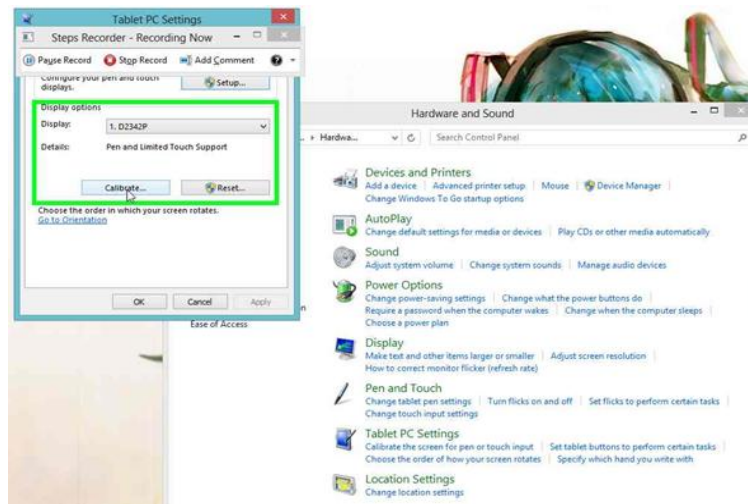
Step 3: left click on "Icon (button)" in "Control Panel"



Step 4: left click on "Calibrate the screen for pen or touch input (link)" in "Hardware and Sound"



Step 5: left click on "Calibrate... (button)" in "Tablet PC Settings"



Step 6: left click on "Touch input (button)" in "Calibrate pen or touch input screens"

